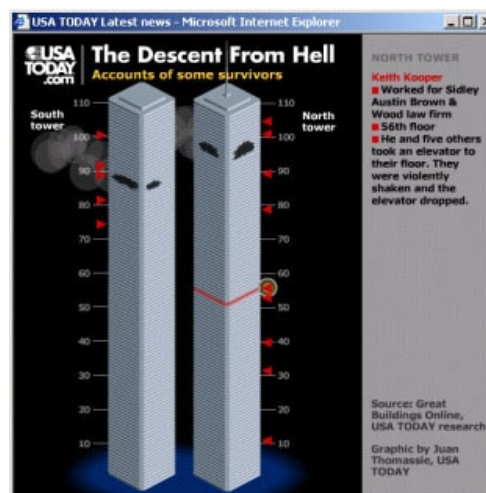
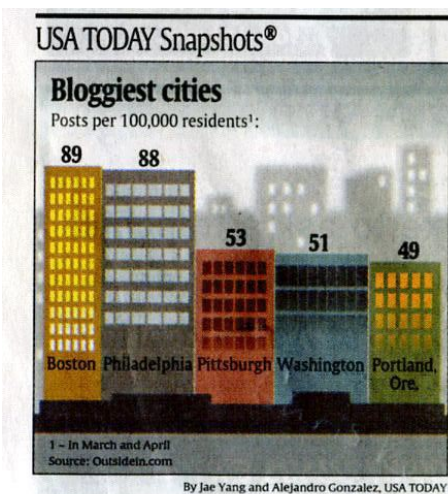
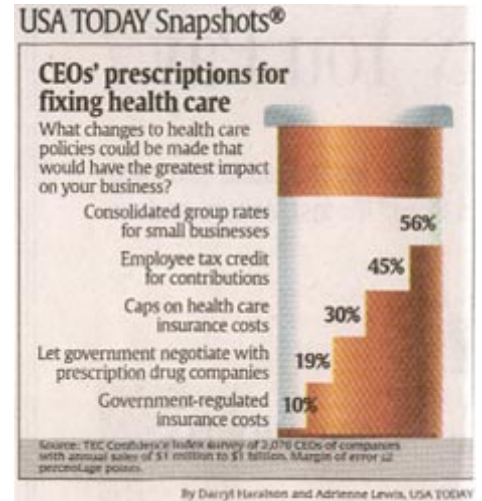
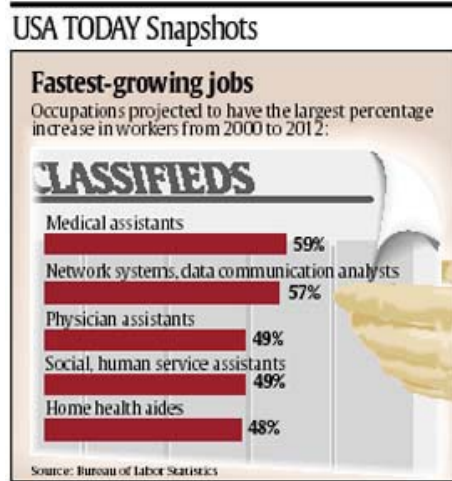
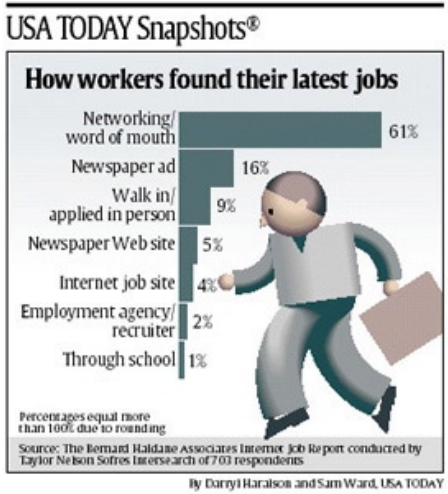


BAR CHARTS

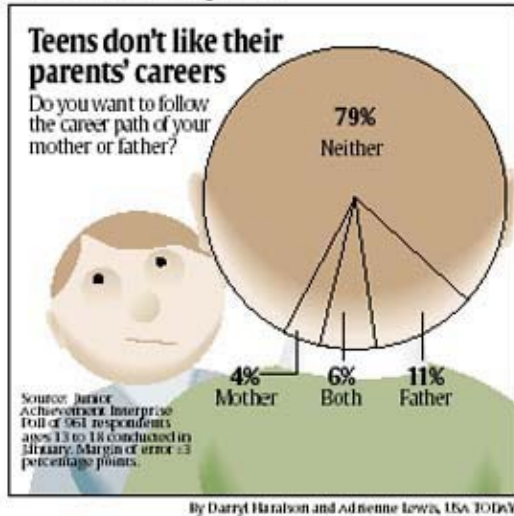
A bar chart, also known as a bar graph, is a chart with rectangular bars of lengths proportional to that value that they represent. Bar charts are used for comparing two or more values. The bars can be horizontally or vertically oriented. Sometimes a stretched graphic is used instead of a solid bar.



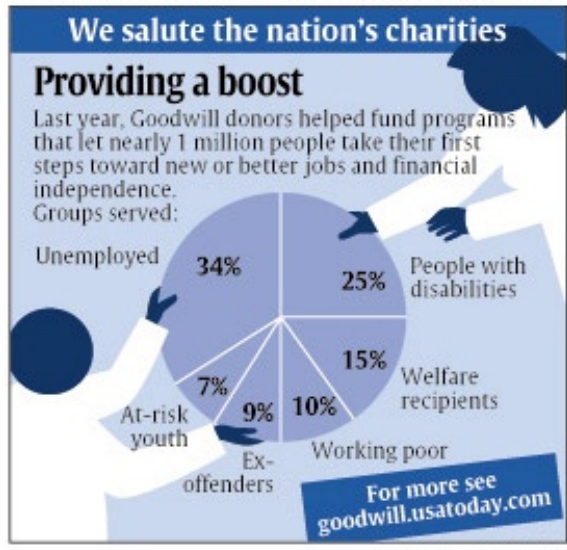
PIE CHARTS

A pie chart (or a circle graph) is a circular chart divided into sectors, illustrating relative magnitudes or frequencies or percents. In a pie chart, the arc length of each sector (and consequently its central angle and area), is proportional to the quantity it represents. Together, the sectors create a full disk. It is named for its resemblance to a pie which has been sliced.

USA TODAY Snapshots

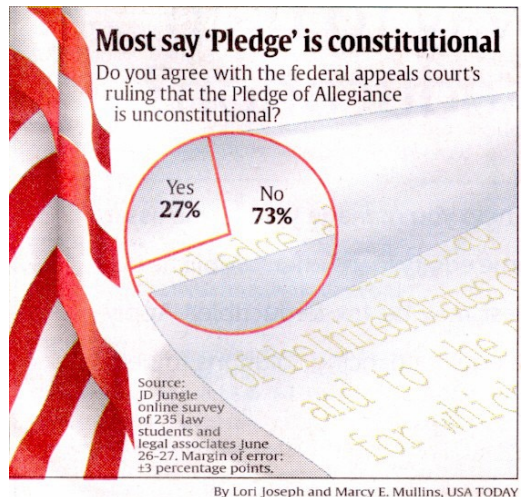
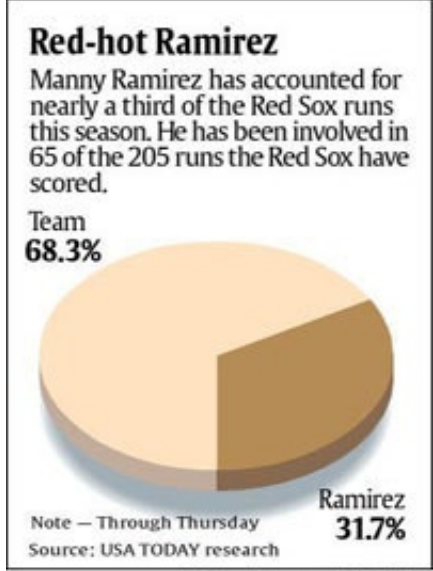
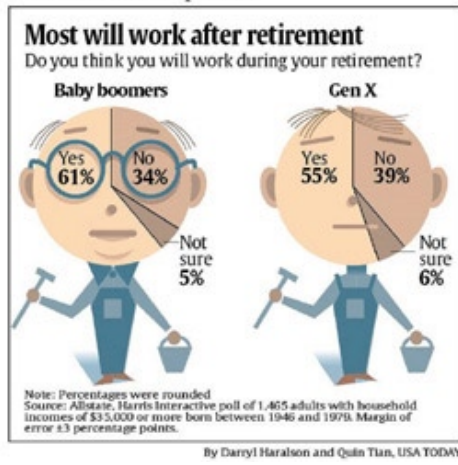


USA TODAY's 25th Anniversary Snapshots®



© Copyright 2007 USA TODAY, a division of Gannett Co. Inc. All rights reserved.

USA TODAY Snapshots



CLASSWORK Bar and Pie Charts

Using Adobe Illustrator, create a **BAR CHART** for the following information. Add additional graphics to support the information/statistics and add interest to the layout.

teenagers' vanilla ice cream consumption in gallons per year, from 1997 through 2004

1997 = 288

1998 = 201

1999 = 295

2000 = 274

2001 = 262

2002 = 296

2003 = 278

2004 = 319

source: National Ice Cream Retailers Association

Using Adobe Illustrator, create a **PIE CHART** for the following information. Add additional graphics to support the information/statistics and add interest to the layout.

how people spend their vacation

visit family/friends 30%

travel/sightsee 26%

stay at home 21%

summer/winter resort 17%

no vacation/don't know 6%

source: representative sampe of 595 adults

*Your layouts should fit into a 4" x 5" document (horizontal or vertical).